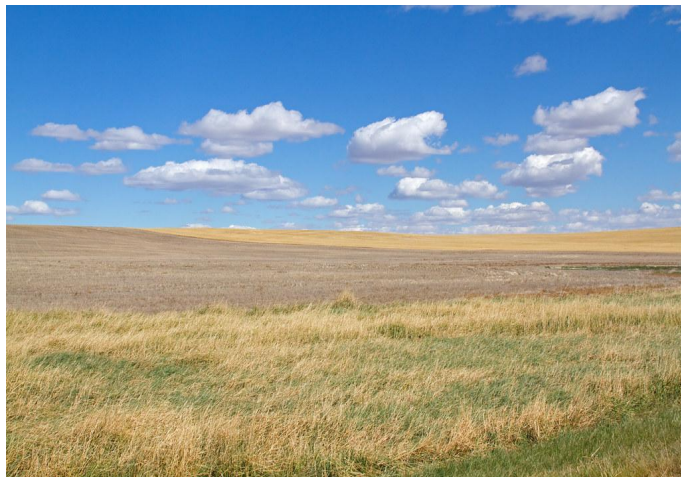


Everything European Part 1

Physical Features	
<b>uplands</b>	Upland areas are high above sea level. They are often (but not always) mountainous. They usually consist of igneous rocks and experience lower temperatures, high rainfall and are windy.
<b>plains</b>	Broad area of relatively flat land. Plains are one of the major landforms, or types of land, on Earth. They cover more than one third of the world's land area. Plains exist on every continent.
<b>mountain range</b>	Group or chain of mountains that are close together.
<b>marshland</b>	Low-lying wetland with grassy vegetation: usually a transition between land and water.
<b>glacier</b>	Huge mass of ice that moves slowly over land.
<b>river</b>	A large natural stream of water flowing in a channel to the sea, a lake, or another river.



Key Places	
<b>Europe</b>	One of seven continents located in the northern hemisphere.
<b>River Danube</b>	The second longest river in Europe. Its source lies in the Black Forest mountains of western Germany; it flows for approximately 2,850 kilometers to its mouth at the Black Sea.
<b>River Rhine</b>	One of the major European rivers, which has its sources in Switzerland and flows in a mostly northerly direction through Germany and the Netherlands, emptying into the North Sea.
<b>Alpine Mountains</b>	Mountain range in central Europe, stretching across France, Italy, Germany, Austria, Slovenia, Switzerland and Liechtenstein.

Key facts about Europe

Europe is located completely in the northern hemisphere and mainly in the eastern hemisphere. Europe borders onto the Arctic Ocean in the North, the Atlantic Ocean in the west and the Mediterranean Sea in the South.

Of the 50 European countries, 27 nations belong to the European Union (EU) which is a political and economic union.

Vatican City is the smallest country both by population and size not only in Europe, but also in the world.

Mount Elbrus in Russia, part of the Caucasus mountain range, is the highest mountain in Europe at 5,642 metres.

The Volga River in Russia is Europe's longest river at 3,692 km.



Key Vocabulary	
<b>region</b>	A large area with common features.
<b>border</b>	A real or imaginary line that divides two areas.
<b>hemisphere</b>	Half a sphere. One half of the Earth.
<b>altitude</b>	The height something is above sea level.
<b>alpine</b>	A mountain region just below the snow line. Low temperatures make it difficult for plants to grow here.
<b>peak</b>	The top part of a mountain that rises to a point.
<b>uplands</b>	A large area well above sea level.
<b>export</b>	Send goods produced in one country to another country to be sold.
<b>transported</b>	Carried from one place to another.

